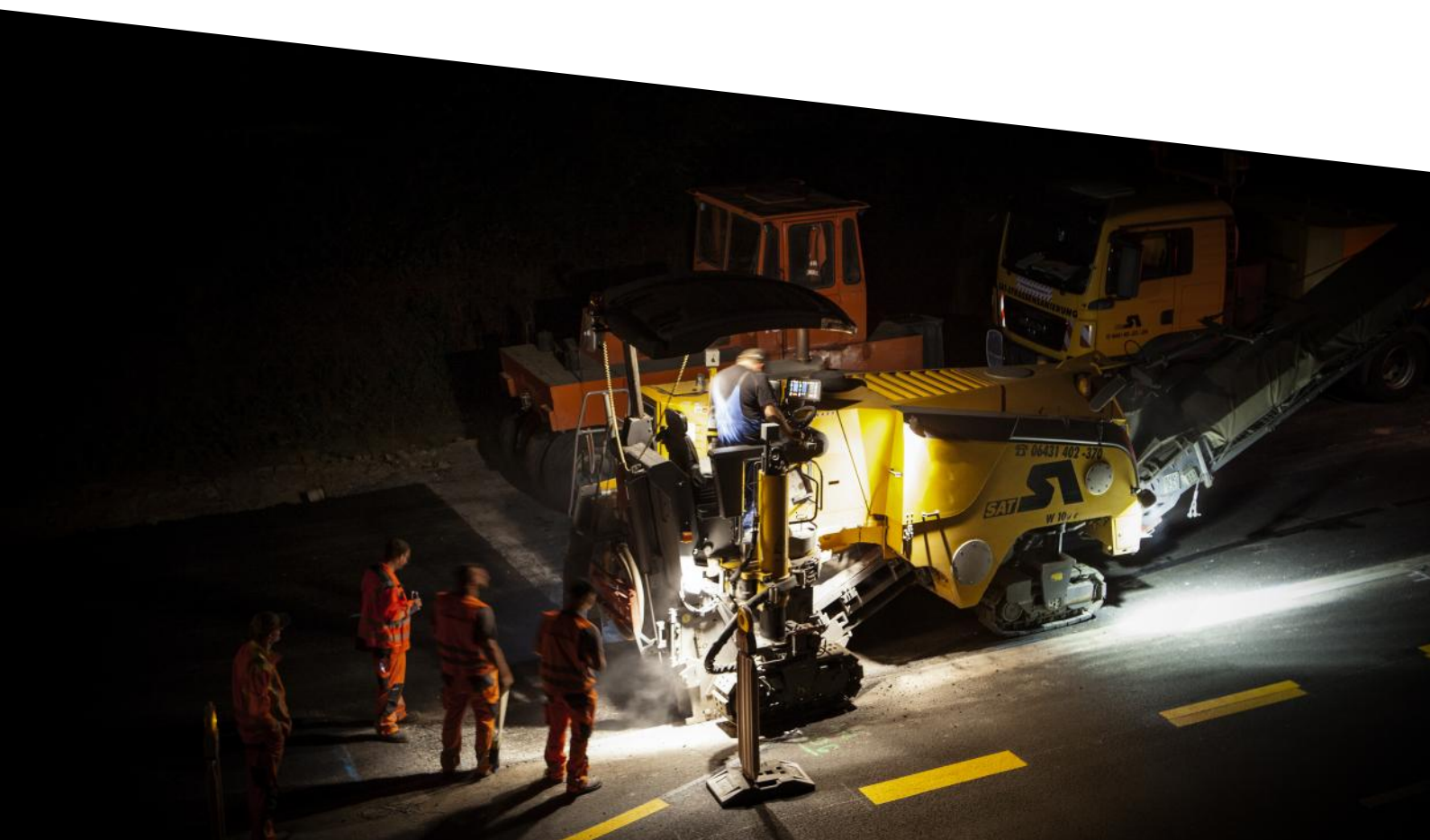


SOLIDLINE

Designed by Ledlenser

PRODUCT DATA SHEET

Solidline SAL2R



Solidline SAL2R

PRODUCT DESCRIPTION

Impressively bright, impressively versatile: The Solidline SAL2R is a compact LED area light with a powerful performance package for many fields of use around the house, garden and workshop. Whether by stand, tripod thread, carabiner or magnet – this work light can be positioned extremely flexibly. From any position, the SAL2R shines with its large function package and offers white light in four different color temperatures with four brightness levels each. Combining this with the available red light in constant or flashing mode it offers an impressive 18 different light functions. The robust powerhouse is fuelled by a powerful, integrated rechargeable battery that can also be used as a power bank.

- Compact, powerful LED spotlight with 18 different light functions and a power bank function (USB-A output)
- Four available white light color temperatures (2700-6500K) with four brightness levels each; additional red light function (constant or flashing)
- 180° swiveling lamp head for flexible alignment of the light beam
- Base magnet, integrated snap hook and tripod thread for flexible mounting
- Easily rechargeable via USB-C; integrated battery and charge level indicator

TECHNICAL DATA

| | |
|----------------------------|----------------|
| Width [mm] | 98 |
| Depth [mm] | 45 |
| Height [mm] | 111 |
| Weight incl. batteries [g] | 465 |
| Focus function | No |
| Primary material | ABS |
| Secondary material | Other plastics |
| Cartridge | No |

POWER SUPPLY

| | |
|--|--|
| Power source type | Rechargeable battery |
| Battery quantity | 1 |
| Battery type | Li-ion |
| Battery replaceable | No |
| Total battery voltage [V] | 3.7 |
| Total battery capacity [mAh] | 13500 |
| Total battery energy ² [Wh] | 49.5 |
| Rechargeable | Yes |
| Charging time ⁵ [min] | 360 |
| Energy modes | Energy Saving |
| Energy status indicator | Battery Indicator, Charge Indicator, Low Battery Warning |

FURTHER SPECIFICATIONS

| | |
|--------------------------------|------------|
| IP class | IP54 |
| Drop test (drop height) [m] | 1 |
| Working temperature range [°C] | -20 to +40 |

LIGHT FUNCTIONS

Low Power, Mid Power, Power, Boost

LIGHT SOURCE

| | |
|-----------------------------|--------------|
| Amount LEDs | 1 |
| LED type | COB LED |
| Color | White |
| Color temperature [K] | 2700 to 6500 |
| Color rendering index (CRI) | 70 |

LEDLENSER VALUES

| Energy Saving | Boost | Power | Mid Power | Low Power |
|--------------------------------|-------|-------|-----------|-----------|
| Light output ¹ [lm] | 1500 | 750 | 300 | 120 |
| Beam distance ¹ [m] | 60 | 40 | 25 | 10 |
| Run time ¹ [h] | 6 | 10 | 25 | 65 |

SWITCH

End Cap Switch, Multifunctional Switch

FEATURES

Red Light

TECHNOLOGIES

Power Bank Function

Solidline SAL2R

PACKAGING AND LOGISTICS



PACKAGING INFORMATION

| | |
|-----------------------|------------|
| Type of packaging | Blister |
| Scope of delivery | USB cable |
| Item No. | 502742 |
| Customs tariff number | 8513100000 |
| Color | black |

SINGLE PACKAGE

| | |
|---------------------------|---------------|
| Dimensions W x H x D [cm] | 15 x 28 x 7.2 |
| Gross weight [g] | 600 |
| GTIN-13 | 4058205030694 |

INNER CARTON

| | |
|---------------------------|------------------|
| Unit | 6 |
| Dimensions W x D x H [cm] | 38 x 28.7 x 32.5 |
| Gross weight [g] | 4180 |
| GTIN-13 | 4058205030687 |

EXPORT CARTON

| | |
|---------------------------|------------------|
| Unit | 12 |
| Dimensions W x D x H [cm] | 61.5 x 41 x 36.5 |
| Gross weight [kg] | 9.4 |
| GTIN-13 | 4058205030670 |

Solidline SAL2R

FOOTNOTES

The information pertaining to scope of delivery, appearance, performance, dimensions and weight corresponds to the information available at the time of publication. In the interest of product development, we reserve the right to change scope of delivery, appearance, design and color without prior notice. Product images may vary from the actual products and may show optional accessories which can be purchased separately. Errors and omissions excepted.

1) Measurement values according to ANSI FL1 in the respective setting. If no setting is explicitly indicated, the values refer to luminous flux (lumens/lm) and lighting range (meters/m) on the highest setting, and to battery duration (hours/h) on the lowest setting. A boost function (if available) can be used several times, but only for short periods of time. If the light is equipped with (a) colored LED(s), the measurement values are given for the white light or the white LED. If the light has different energy modes, the measurement is made based on the "energy saving mode".

2) Calculated capacity value in watt-hours (Wh). This applies to the delivery state of the battery/ies inside the respective item, or for lights with rechargeable battery/ies, to the rechargeable battery/ies inside the product when fully charged.

5) Charging time varies by hardware used.